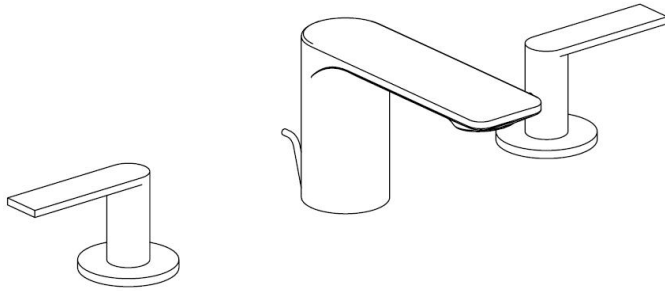




LAG-91191CSL



TEMP.& WATER PRESSURE REQUIREMENTS



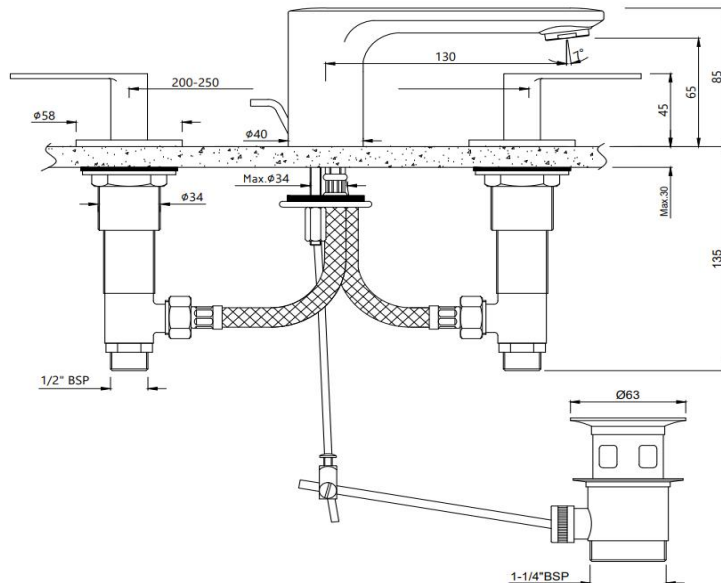
Required Pressure: 1~3 (psi)



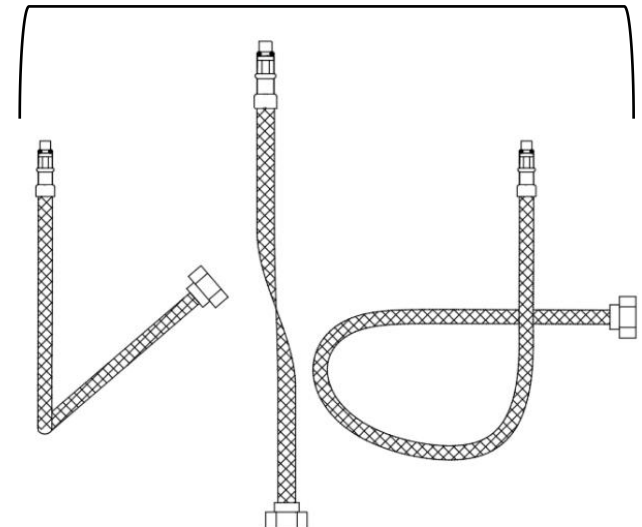
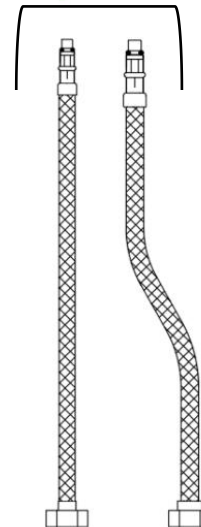
Required Temperature: 5-65°C

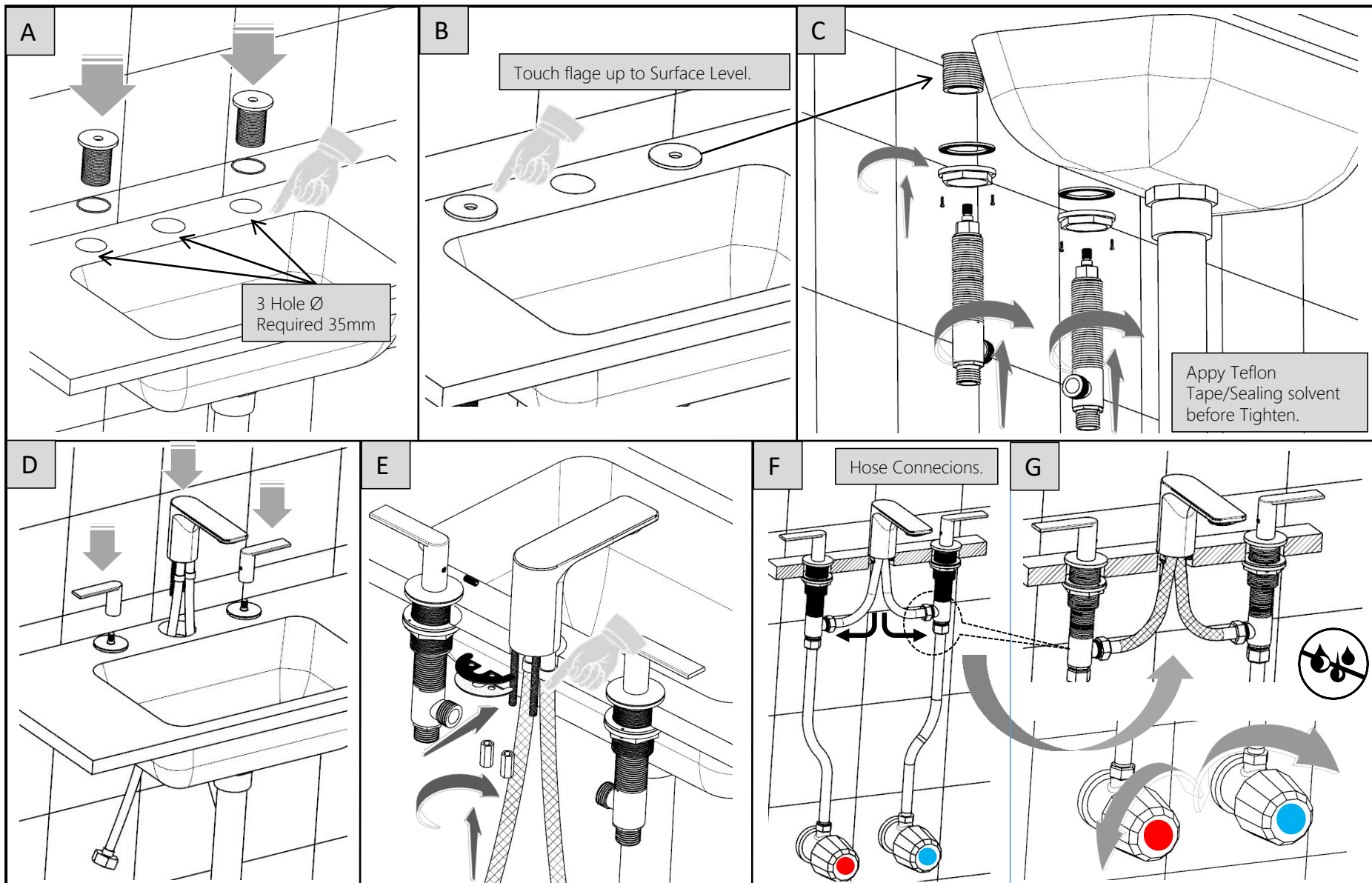
Note: Above values are the recommend values for Getting Conventional Outputs.

TECHNICAL DRAWING

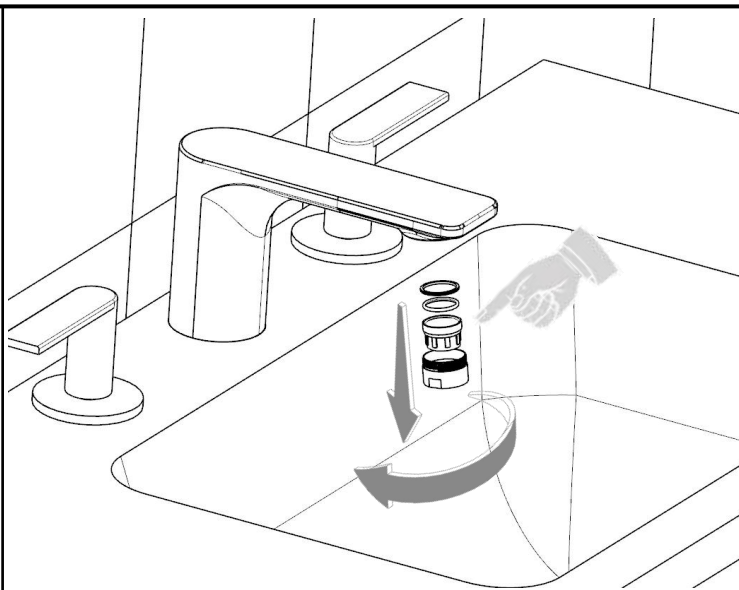
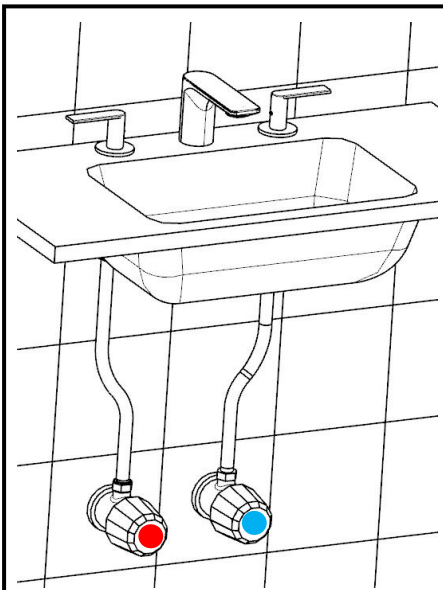
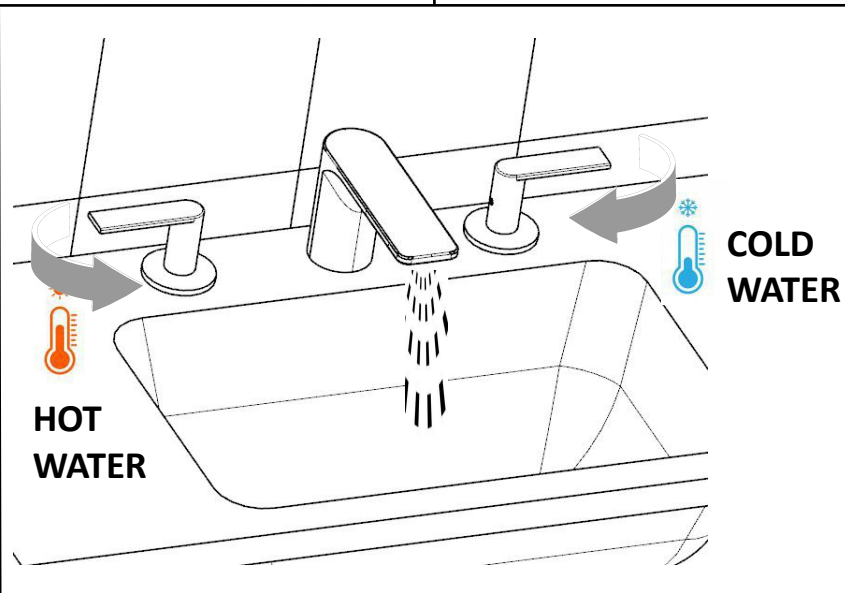
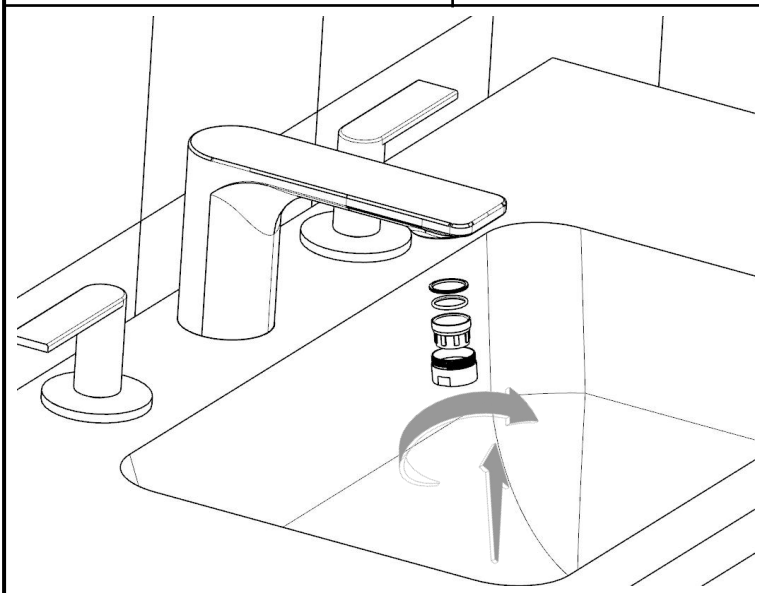
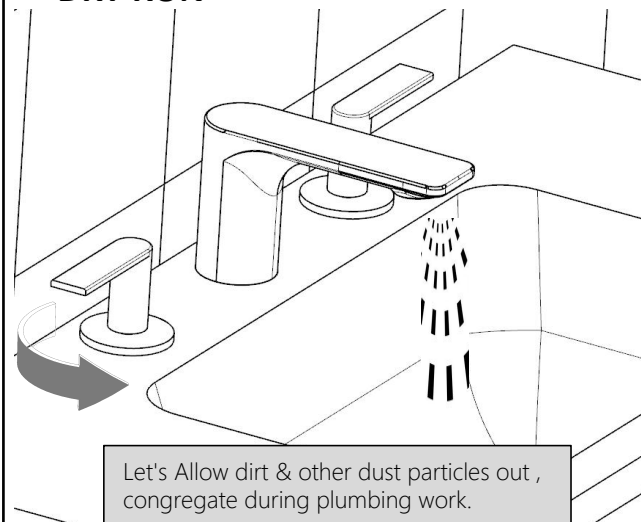


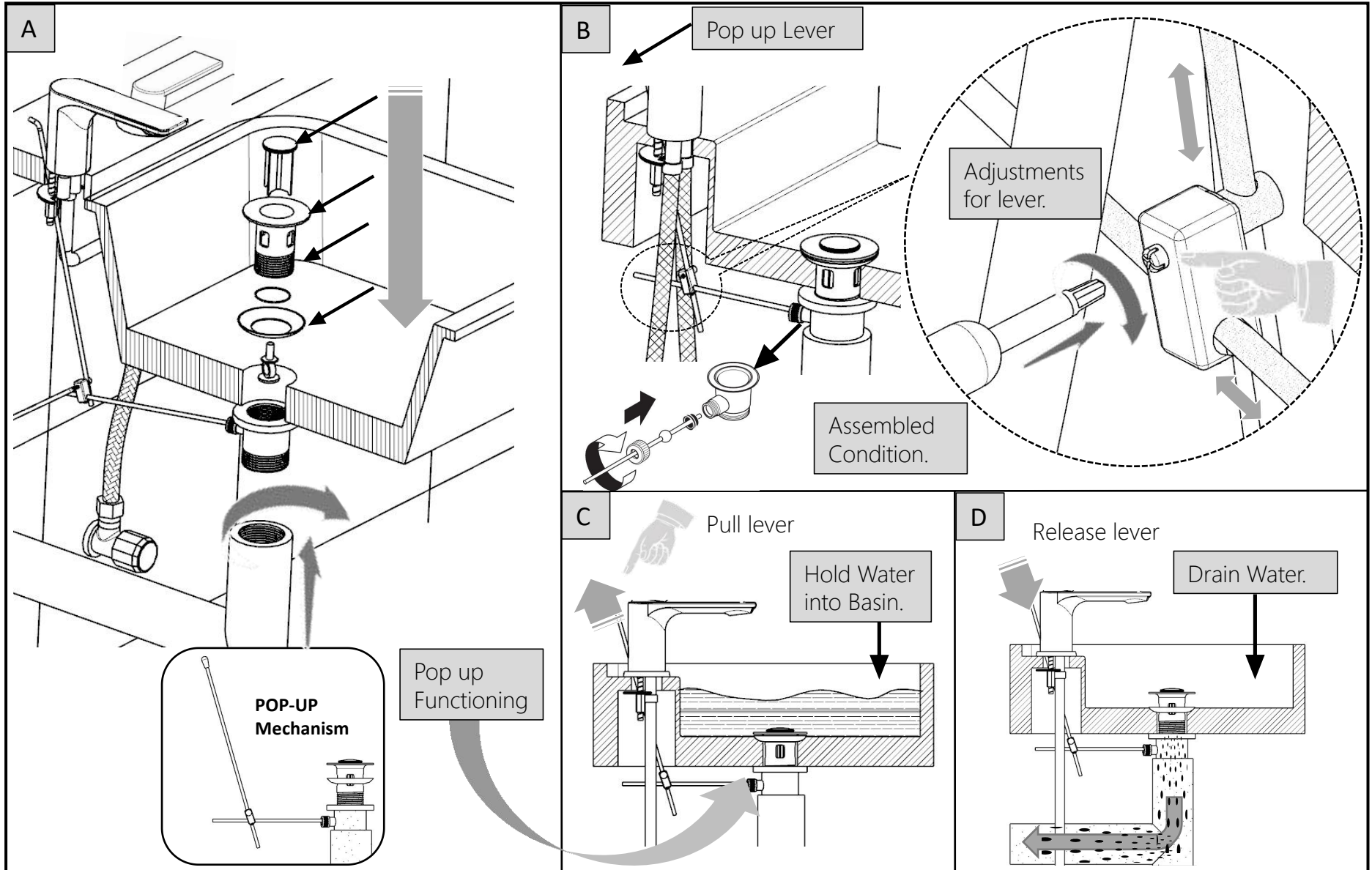
TAKE CARE DURING CONNECTION'S



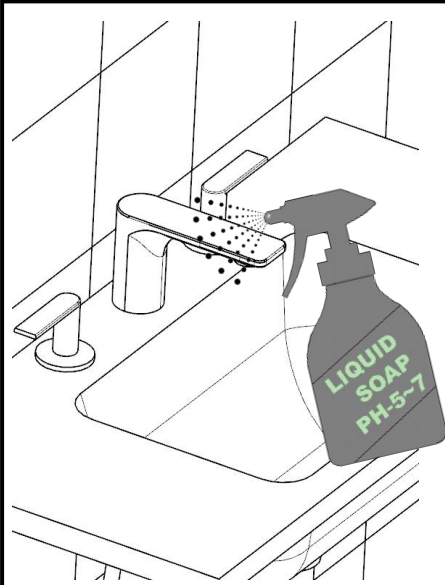


Keep water supply off during Connection.

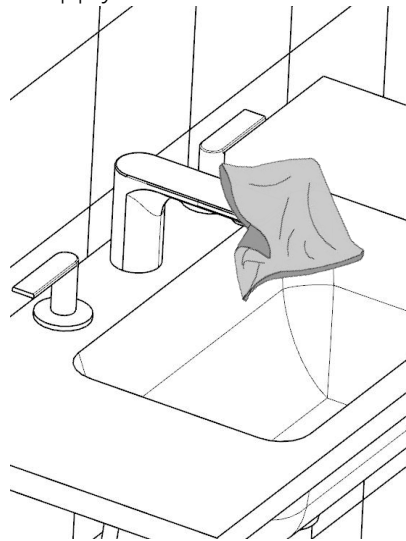
**DRY RUN**



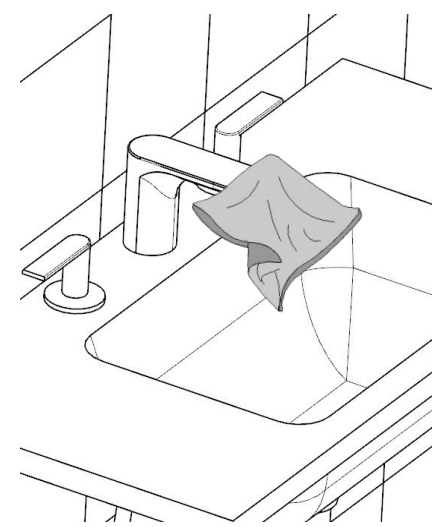
Note: This Installation Method is applicable for Single Lever Basin Mixer with Pop-up Waste System.



Apply soft cotton cloth



Apply soft cotton cloth

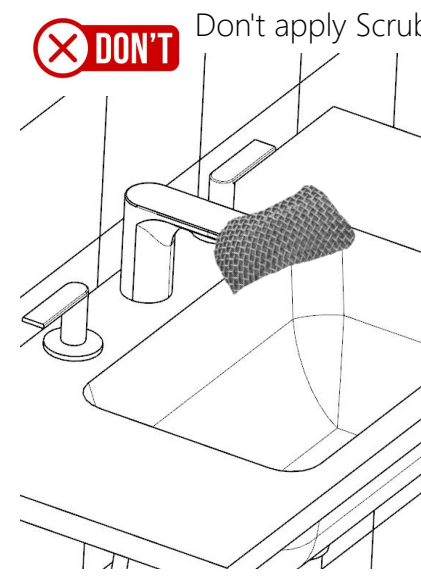


✗ DON'T



✗ DON'T

Don't apply Scrub



Steps & Cleaning agents requirements for Aerator Cleaning.

